

BladeFLASK

100 | Scalpel Blade Removal System



A simply safer way of removing blades.

Remove, contain and dispose of blades without the unacceptable sharps injury rates of two-hand removal techniques involving fingers, forceps or re-sheathing.



The essentials of sharp attention

A simply safer way to stay focused on your job

Clicksmart BladeFLASK provides a simply safer way to remove and contain used scalpel blades. This world-first single-handed scalpel blade remover prevents the dangerous injuries commonly caused by removing blades with fingers, forceps or re-sheathing.

Continue to use the best tool for your job

Most practitioners prefer the balance, weight and ergonomics of a reusable steel scalpel handle but removing used blades manually compromises staff safety.

Filmy disposable plastic scalpels are not the answer because they are harder to use, more dangerous and less cost-effective.

The BladeFLASK simple 'push and click' blade removal solution for steel scalpels:

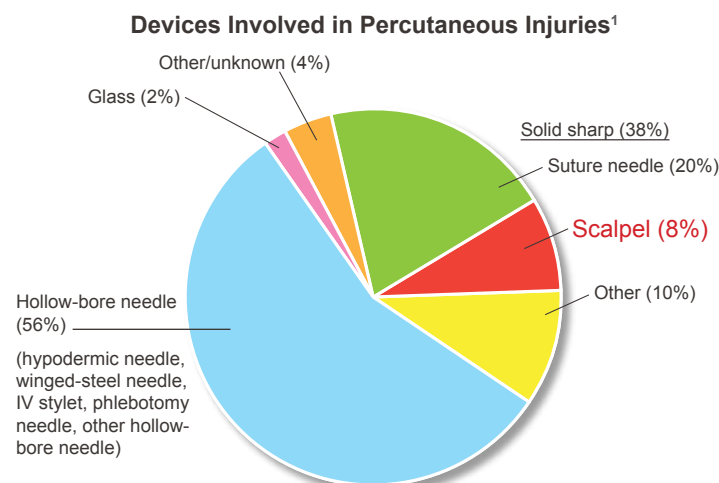
- IMPROVES PATIENT SAFETY by enabling practitioners to use ergonomic precision steel scalpels
- IMPROVES STAFF SAFETY by ensuring the used scalpel blade is removed with safe single-handed technique and then safely contained until final disposal.

Minimise risks of injury and infection

Sharps injuries are a serious occupational hazard in healthcare settings. Scalpel cuts are not only more severe than needle stick injuries, they are also more likely to happen. The single-hand technique of removing blades minimizes your risk.

- 8-11% of sharps injuries are caused by scalpel blades.^{1,2}
- There are 662 scalpel injuries per 100,000 scalpel blades used, compared to 3.2 syringe and loose needle incidences per 100,000 disposable syringes and loose needles.³ Scalpel injury rates are 200 times higher than sharps injuries involving syringes.

These alarmingly common scalpel injuries cause pain, emotional distress, potentially fatal infections, and damage to digital nerves, arteries or tendons requiring microsurgery and extensive rehabilitation. BladeFLASK dramatically reduces the risk of scalpel blade injuries in your workplace.



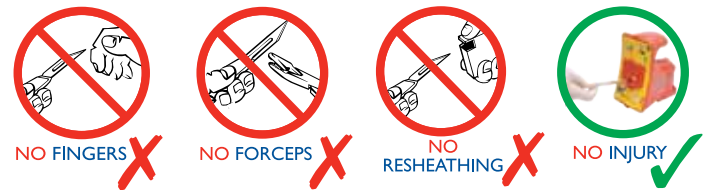
Make compliance a practical reality

BladeFLASK ensures optimal safety based on speed and convenience for the end-user, ergonomic simplicity and passive, automatic and single-handed safety principles. By enabling practitioners to continue to use their preferred metal scalpel handles, the wall-mounted or bench-mounted BladeFLASK improves both patient care and staff safety.

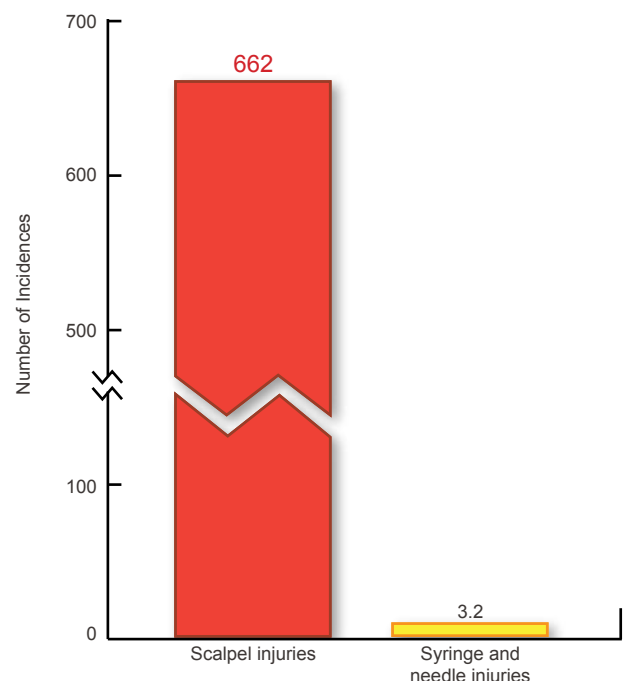
Healthcare workers in the United States alone report between 600,000 and 1 million sharps injuries per year. Many more go unreported.⁴ Occupational health and safety regulations worldwide are responding.

BladeFLASK meets these essential safety standards:

- OSHA Bloodborne Pathogen Standard "1910.1030"
- Australian/New Zealand Standard "AS/NZS 3825:1998"
- CE compliant



Incidence of Injury per 100,000 devices used³



1. "CDC (Centre for Disease Control and Prevention) Sharps Injury Prevention Workbook 2008." from <http://www.cdc.gov/SharpsSafety/index.html>
 2. Jagger, J., M. Bentley, et al. (1998) "A study of patterns and prevention of blood exposures in OR personnel." AORN Journal 67(5): 979-81, 983-4, 986-7 passim.
 3. Eisenstein, H. C. and D. A. Smith (1992). "Epidemiology of reported sharps injuries in a tertiary care hospital." J Hosp Infect 20(4): 271-80.
 4. Matson, K. (2000) "States begin passing sharps and needle-stick legislation to protect health care workers." AORN Journal 72(4): 699-703, 705-7.

BladeFLASK

100 | Scalpel Blade Removal System

Remove and contain blades with one hand - push and click

BladeFLASK is secured by a reusable mounting bracket, which means you do not have to hold or brace the BladeFLASK when in use. The bracket enables the BladeFLASK to be positioned at point of use (wall, bench or trolley mounted), making single-hand blade removal, containment and disposal as simple as 'push and click'.



Sharps container

BladeFLASK is a puncture proof sharps container. When it is full, the BladeFLASK can be disposed safely without any further exposure to sharps contact.

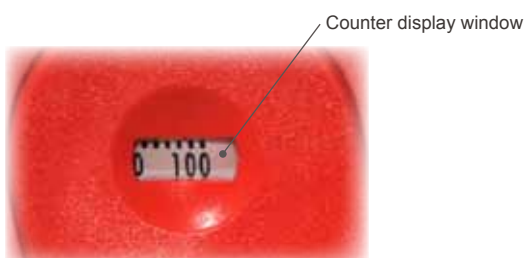
It conforms with the following regulatory requirements:

- UN Transport UN3921
- British Standard BS7320:1990



Auto shut-off

BladeFLASK has a built-in counter with a shut-off mechanism that activates automatically after 100 blades have been removed. There is no danger of overfilling.



Not just effective, it is cost effective

This essential safety solution ensures regulatory compliance, dramatically reduces injury costs, and is significantly cheaper than disposable plastic scalpels. You will save up to US\$225 of disposable plastic scalpels with one BladeFLASK.



Applications of BladeFLASK

BladeFLASK single-handed scalpel blade remover can be used in anywhere scalpel removal is required, including:

- Hospital departments
- General practice
- Podiatry/Chiropody
- Design Studios
- Education
- Veterinary
- Dental clinics
- Pathology laboratories
- Mortuaries
- ... and wherever scalpels are used

Just in case it might happen

"Do you expect a car accident when you drive home tonight?"

"No"

"Then why do you wear the seat belt?"

"Just in case..."

Use a single-handed blade remover just in case...



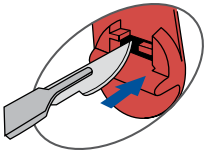

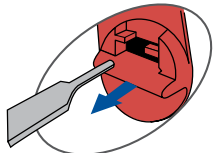
Specifications

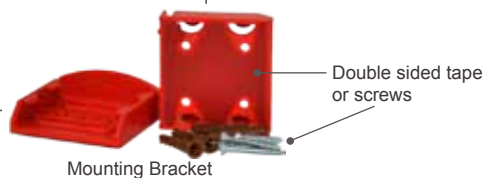
Colour versions	Red - for USA Yellow - for all other countries
Product codes	QFYGEN - QCLICKSMART BLADE _{FLASK} Scalpel Blade Remover QBRGEN - QCLICKSMART BLADE _{FLASK} Mounting Bracket
GMDN code	46235
Blade capacity	100 blades - the Blade _{FLASK} shuts off automatically when maximum capacity is reached.
Compatible Blades & Handles*	Handles: #3, 3L, 4, 4L, 5, 7, 9, Lawton long handle. Blades: #10, 10a, 11, 12, 13, etc. up to and including #25a, 27 and 36.
Incompatible Blades & Handles	Baron handle, Beaver handle, Disposable handles
Size (per unit)	Length 11cm , Width 9cm , Height 14cm
Weight (per unit)	Approximately 250g
Accessories	Mounting Bracket - the bracket holds the Blade _{FLASK} in place to allow single-handed removal of scalpel blades.

Material	ABS (acrylonitrile butadiene styrene)
Latex	No
DEHP	No
Sterile	No
Re-usable	Multi-use - Each unit removes 100 blades before disposal
Disposal method	The infectious substance logo on the front label and the correct sharps container colour of the unit allow it to be disposed of as medical waste. Please follow your establishment's procedures for the disposal of medical waste.
Regulatory approvals	Australia - Listed under TGA ARTG NO: 146821 USA - FDA 510(K) premarket approved #K983367 as a sharps container Europe - Class I medical device under Council Directive 93/42/EEC and CE marked

* Some brands may not work with Qlicksmart Blade_{FLASK}

Instructions for Use

- 
- Place blade flat onto landing pad
- Sharp Edge Right / Tang "UP"
- 
- Push scalpel handle into Blade_{FLASK} parallel to landing pad
- Until pronounced **CLICK**
- 
- Remove handle
- Blade contained in Blade_{FLASK} (removes up to 100 blades)



Note: Blade_{FLASK} is mounted on Mounting Bracket during use.
Blade_{FLASK} to be disposed of as medical waste after 100 blades inserted.

Distributors in Ireland



1 Chelmsford
Celbridge
Co. Kildare
Tel: 01 503 9933 Fax: 01 503 9922
Email: info@corrhc.com

Hospitals and Healthcare



4045 Kingswood Rd
Citywest Business Campus
Co. Dublin
Tel: 01 468 7500
Hosp Orders Tel: 01 468 8456
Hosp Orders Fax: 01 466 0782

Laboratories and Educational



Orion Business Campus
Northwest Business Park
Ballycoolin
Dublin 15
Tel: 01 882 2222 Fax: 01 882 2333
Email: sales@ie.vwr.com